



**ORANGE**  
planthirecc  
co.reg.no:2004/042637/23 . VAT no: 4630221192  
transport and plant hire

Komani/Queenstown

- 19 Factory Road,  
Industrial sites
- 066 230 4794
- admin@ophire.co.za

Gqeberha

- Cnr 8<sup>th</sup> Avenue and Marine Drive,  
Summerstrand
- 072 874 4687
- adminpe@ophire.co.za

## Komani Construction Machinery



14 Ton Isuzu Flat Bed with Pesci 245/2 Crane



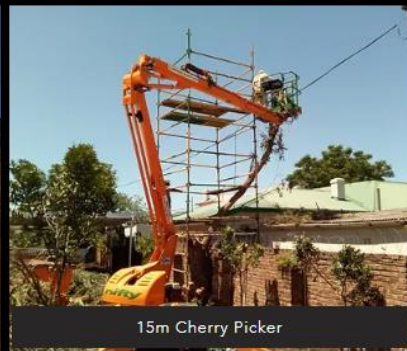
JCB TLB 3CX



8 Ton Hino Flat Bed with Fassi F130A Crane



8 Ton Isuzu Tipper



15m Cherry Picker



2.6 Ton Vibratory Smooth Drum Roller



JCB 1CX



TLB JCB 3CX with Pecker

\*We deliver the equipment for an additional fee depending on the location of your site.

\*The periods of rental are individual to the request. It can be yearly, monthly or per day.

\*The rates go according to our standard price lists. For individual quotes you can contact us.

\*Our service is available throughout the whole Eastern Cape. Our main market is Komani region and the Border area.

## Komani Portable Toilet Hire



\*We Deliver and Collect from your site.

\*We Offer an Option to clean Weekly and to clean once every two Weeks, depending on the needs of your Site.

\*Servicing includes a general clean and replacing of toilet paper.

\*Sewerage is Disposed of in a Responsible Manner.

## Komani VIP Toilet Trailer Hire

Our VIP Trailer includes two separate rooms each with its own ceramic toilet and wash hand basin. The VIP Toilet Trailer is often sought after for site meetings and corporate events in areas without brick-and-mortar sanitation.

Our VIP Toilet Trailers are serviced during events, depending on the duration and use of the trailer during the event.

Our VIP Toilet Trailers are situated in Komani, formerly known as Queenstown.



## Komani Skip Hire



- \*Skips are delivered to site in Komani.
- \*The emptying of the skip comes at a fee.
- \*You can either contact us for pick-ups or we can arrange a weekly/monthly emptying.
- \*The disposal of waste is included in the emptying-fee
- \*We only accept general waste. No chemical waste.

## Komani Trailer Hire



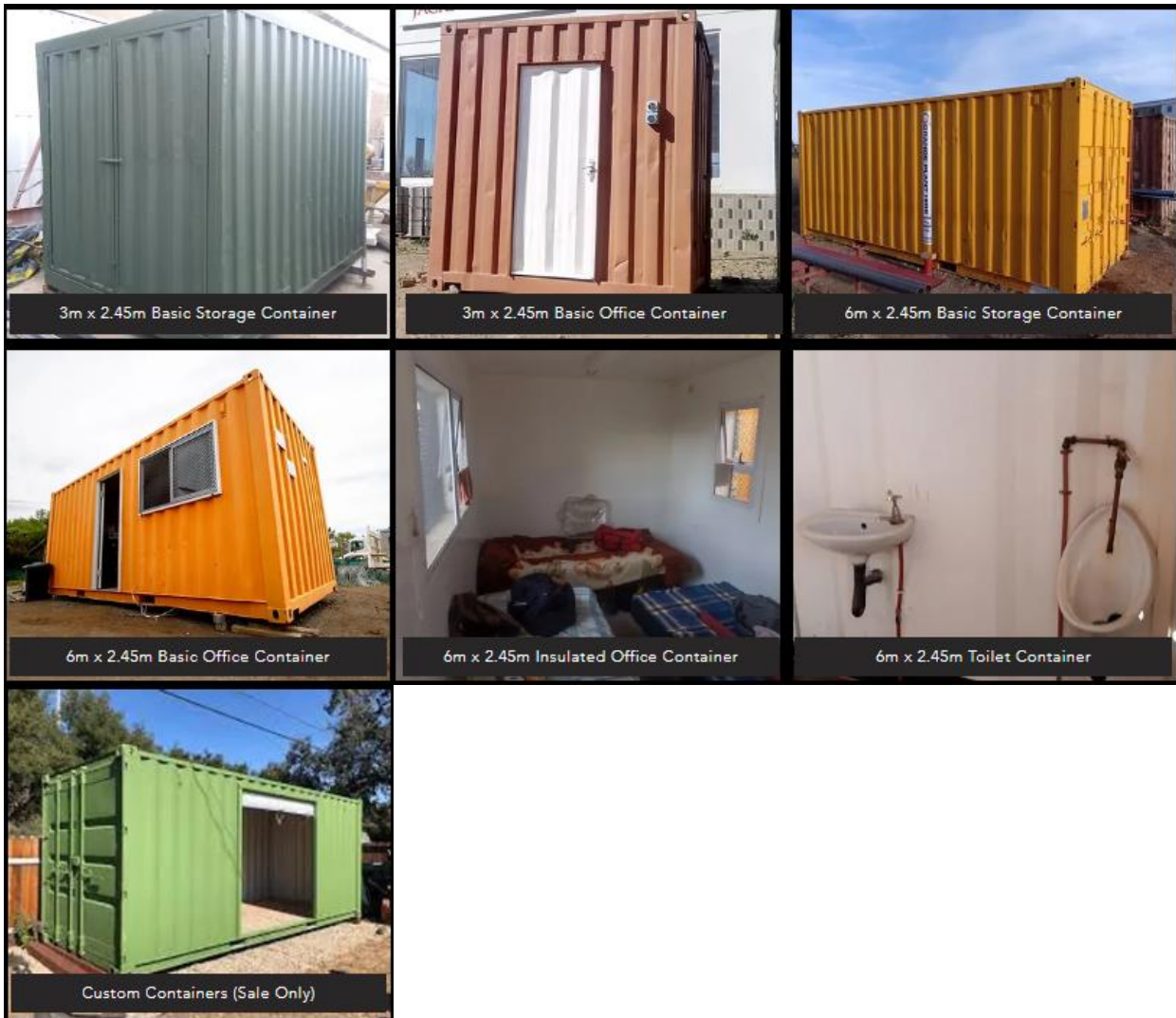
- \*We offer a Double axle Agri Cattle Trailer for Daily Rental
- \*Size is Width 1.5m by Length 3m by Height 1.7m
- \*The Trailer is Galvanized
- \*We offer One Way Trips Between Gqeberha and Komani
- \*Appropriate and Valid Drivers license Required to hire trailers

## Port Elizabeth Skip Hire



- \*Skips are delivered to site in Gqeberha.
- \*The emptying of the skip comes at a fee.
- \*You can either contact us for pick-ups or we can arrange a weekly/monthly emptying.
- \*The disposal of waste is included in the emptying-fee
- \*We only accept general waste. No chemical waste.

## Komani Container Hire



\*Prices for the containers are according to the standard price list.

\*Long-term hires get a discount that will be individually negotiated. The customer will have to sign a lease.

\*Delivery costs for containers are individual depending on the location of the site.

## Pre-Fab Housing

We offer different Pre-Fabs for Rental and for Sale:



\*Our Insulated Modular Pre-Fabs come in standard sizes

\*Each unit has 40mm insulation throughout, a DB Board, 1 x Pedestrian door and fluorescent lighting

## Chromadek Containers



\*Prices for the containers are according to the standard price list.

\*Long-term hires get a discount that will be individually negotiated. The customer will have to sign a

\*Delivery costs for containers are individual depending on the location of the site.

## 175L Petrol Concrete Mixer



Petrol concrete mixer for hire.

This concrete mixer has a rotating drum and is used for mixing concrete aggregate consisting of sand, stone, cement, and water.

This 175L Petrol Concrete Mixer produces 175 liters of mixed concrete which is just over 2 and a half wheelbarrows.

Total Drum Volume: 250 Liters

Concrete Output: 175 Liters

## Komani Self-Storage Yard

### Container Yard Self-Storage:



### Warehouse Yard Self-Storage:



### Business Self-Storage:



\*Rates are individual (monthly)

\*You can access your unit between business hours - (Mon-Fri 08:00-16:00) (After-hour access only in emergencies and after contacting the management)

\*We hire bakkies and drivers for the day if you need help with transporting your equipment

\*All units are monitored by CCTV Camera

\*Security guards in the area

\*Tenant retains the key